

MUSEUM »KNOFF & KNOFF«



»KNOFF & KNOFF« MUSEUM

MUSÉE »KNOFF & KNOFF«

MUSEUM »KNOFF & KNOFF«

Art. Nr. 130909

D

Vor Beginn des Bastelns sollten Sie sich mit den Spritzlingen und der Anleitung vertraut machen. Sollte es einmal vorkommen, dass ein Teil im Bausatz fehlt, kreuzen Sie bitte das fehlende Teil in der Anleitung an und schicken Sie diese bitte an Fa. Gebr. FALLER GmbH, Abt. Kundendienst, kundendienst@faller.de, Kreuzstraße 9, 78148 Gütenbach. Sie erhalten dann umgehend Ersatz. Es kann vorkommen, dass bei einem Bausatz Einzelteile übrig sind.

GB

Before beginning with the assembly please familiarize yourself with the parts and read the instructions carefully. In case of missing parts please indicate these on the instructions leaflet with a circle and return the leaflet to Gebr. FALLER GmbH, kundendienst@faller.de, Kreuzstraße 9, D-78148 Gütenbach, Germany. You will receive the replacement by return. It may happen, that in a kit single parts are not being used.

F

Avant de commencer le montage de votre maquette bien lire la notice et repérer les grappes. Si une pièce manque dans une boîte, cochez la pièce correspondante sur la notice et renvoyez-la-nous à Gebr. FALLER GmbH, kundendienst@faller.de, Kreuzstraße 9, D-78148 Gütenbach (R.F.A.). Nous vous ferons parvenir la pièce par retour. Dans certains kits, il est possible que certaines pièces ne soient pas utilisées.

NL

Vóór het bouwen zou men de gietstukken en de handleiding moeten bestuderen. Indien onverhoopt een onderdeel aan het bouwpakket ontbreekt, gelieve men het ontbrekende deel in de handleiding aan te kruisen en deze te zenden aan Gebr. FALLER GmbH, kundendienst@faller.de, Kreuzstraße 9, D-78148 Gütenbach. U ontvangt dan omgaand en gratis het ontbrekende onderdeel. Het kan voorkomen dat u bij bepaalde bouwdozen onderdelen overhoudt.

Für den Zusammenbau des Modells empfehlen wir folgende FALLER-Artikel (sind nicht im Bausatz enthalten):
For the assembly of the kit we recommend following FALLER products (not included in the kit):
Pour l'assemblage du modèle, nous vous recommandons les articles FALLER suivants (non inclus dans le kit):
Om dit model te bouwen adviseren wij de volgende FALLER producten (maken geen deel uit van deze bouwset):



Art. Nr. 170492
FALLER-EXPERT

Flüssigkleber in Plastikflasche mit Spezialkanüle für feinste Klebstoffdosierung.

Liquid cement in plastic bottle with canule for very fine dosage.

Colle liquide en bouteille plastique avec bec verseur pour un dosage précis.

Vloeibare lijm in plastic-flaçon met doseerbuisje om nauwkeurig te lijmen.



Art. Nr. 170688
SPEZIAL-SEITENSCHNEIDER

zum gratfreien Abtrennen von feinsten Spritzteilen.
Nur für Polystyrol geeignet.

Special side cutter for cutting off ultra-fine moulded parts without burrs.
Only suitable for polystyrene.

Pince coupante spéciale pour couper sans bavure les pièces miniatures moulées par injection. Convient uniquement au polystyrène.

Speciale zijknipsang voor het braamloos afknippen van de fijnste gietstukdelen. Alleen geschikt voor polystyrol.



Inhalt	Spritzlinge	1 ABC	1 x	3 B	1 x	4 B	1 x	5 D	2 x
Contents	Sprues	2 ABC	1 x	4 A	2 x	5 AB	2 x	6 A	1 x
Contenu	Moulages	3 AC	2 x	4 B	1 x	5 C	2 x	6 B	1 x
Inhoud	Gietstukken								

Sa. Nr. 130 909 1

Fensterfolie

Die beiliegende Fensterfolie entsprechend der benötigten Größe ausschneiden und vorsichtig mit wenig Klebstoff auf die Rückseite der Fensterrahmen aufkleben.

Window foil

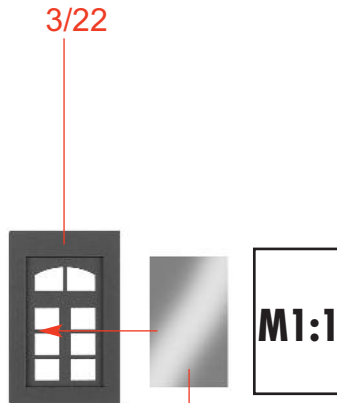
Cut the attached window foil according the illustrations and glue it carefully with a little glue to the rear side of the window frames.

Feuillet transparent pour fenêtres

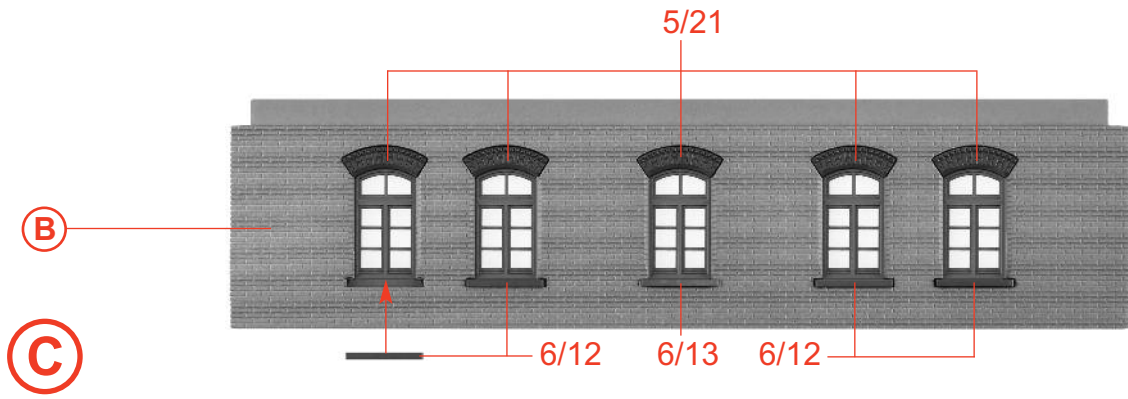
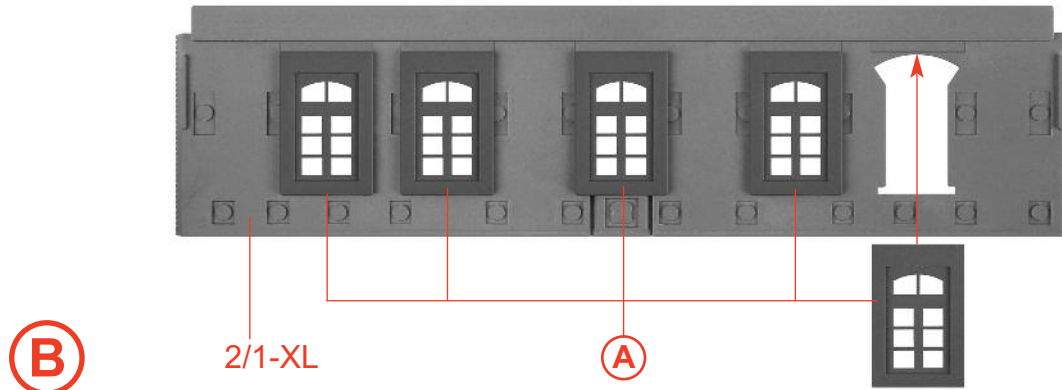
Découper le feuillet transparent pour fenêtres inclus d'après l'illustration. Coller proprement avec un peu de colle sur la face arrière du cadre des fenêtres.

Vensterfolie

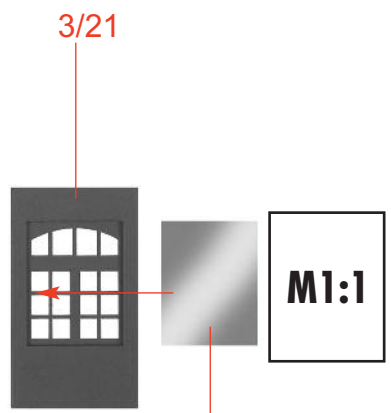
De meegeleverde vensterfolie conform de afbeeldingen uitknippen of uitsnijden en voorzichtig met een beetje lijm op de achterzijde van het raam plakken.



Fensterfolie 11,5 x 19,5 mm
Window foil
Feuillet transparent
Vensterfolie



A 5 x

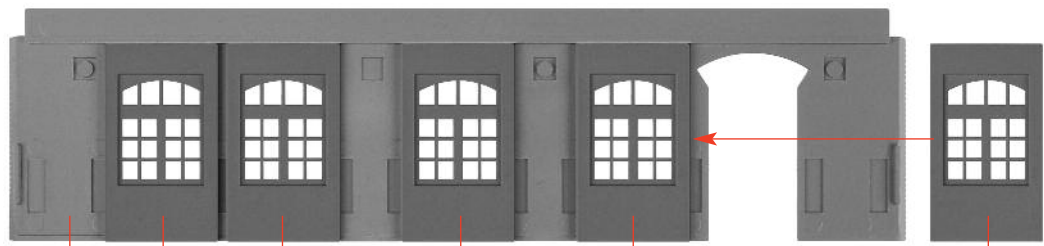


3/21

M1:1

Fensterfolie 15,5 x 20 mm
 Window foil
 Feuille transparent
 Vensterfolie

D 5 x

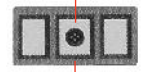


E

2/2

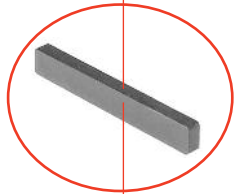
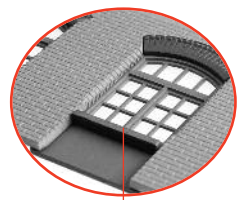
D

Deco 9



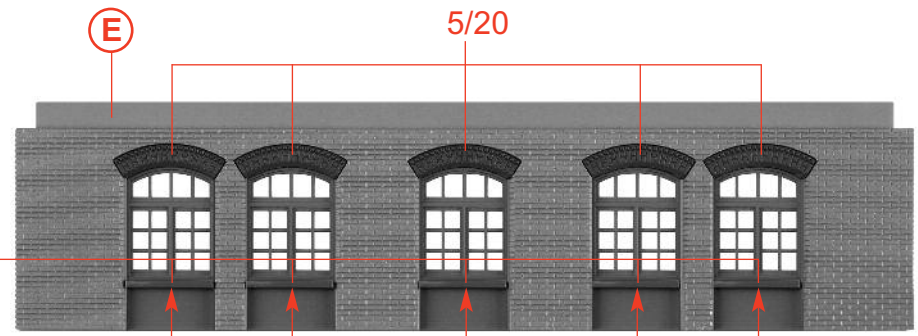
2/5

F 5 x



G

6/11



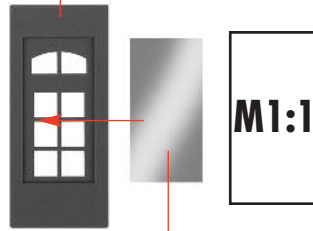
E

5/20

F

4

3/24

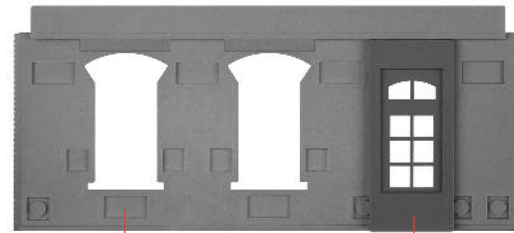


M1:1

Fensterfolie 11,5 x 23 mm
 Window foil
 Feuille transparent
 Vensterfolie

H

I

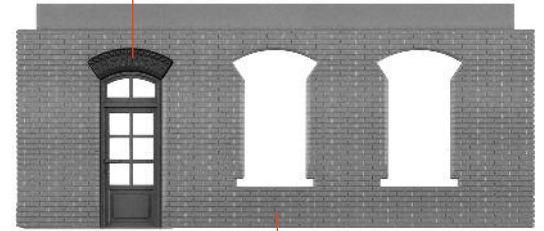


2/3

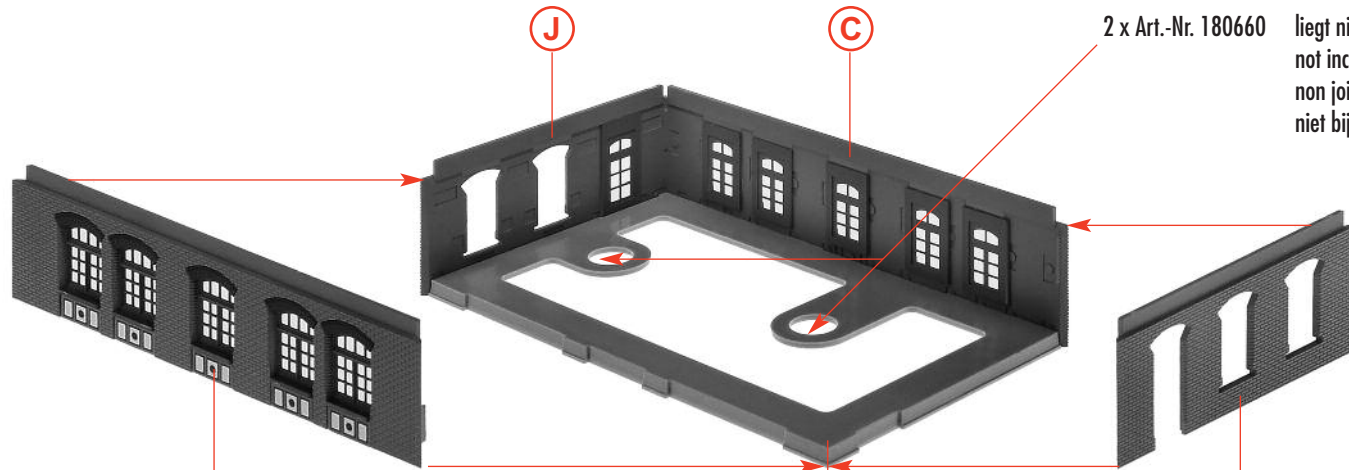
H

J

5/21



I



2 x Art.-Nr. 180660

liegt nicht bei
 not included
 non jointe
 niet bijgevoegd

K

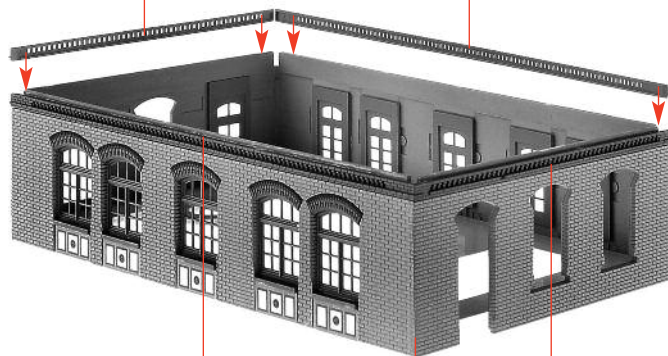
G

1/1

2/3

5/32

5/31



5/32

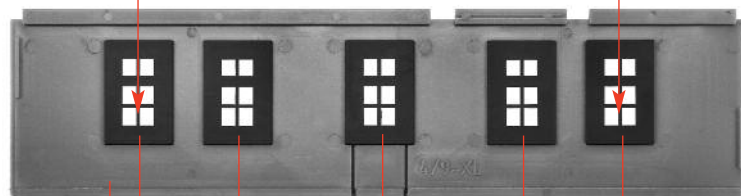
5/31

L

K

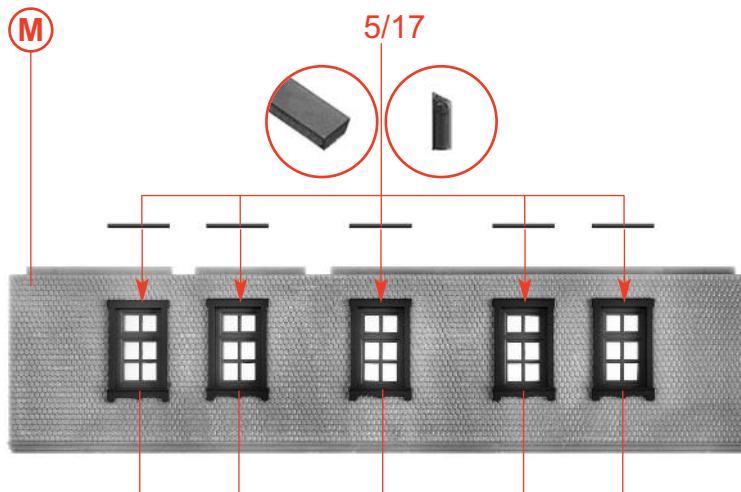
Fensterfolie 23 x 124 mm
 Window foil
 Feuillet transparent
 Vensterfolie

5



M 2 x 4/9-XL

3/2



N 2 x

5/10

M

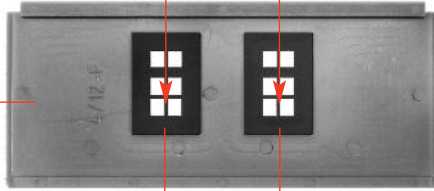
5/17

N

6 Fensterfolie 23 x 41 mm
Window foil
Feuillet transparent
Vensterfolie



4/12-F



3/2

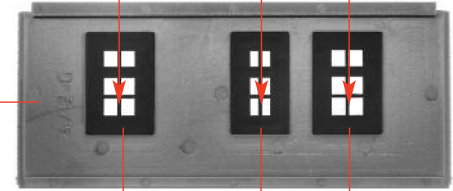
3/2

O

Fensterfolie 23 x 67 mm
Window foil
Feuillet transparent
Vensterfolie



4/12-G



3/2

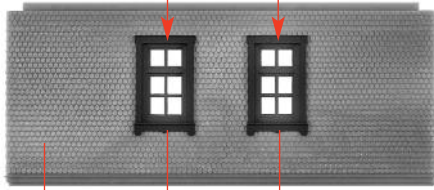
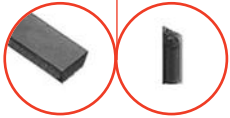
3/1

3/2

Q

5/17

5/17



5/10

5/10

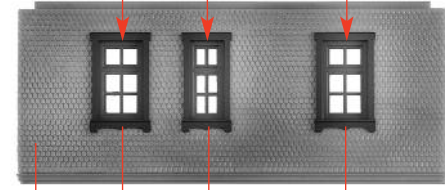
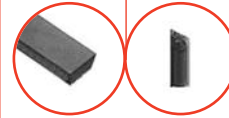
O

P

5/17

5/16

5/17



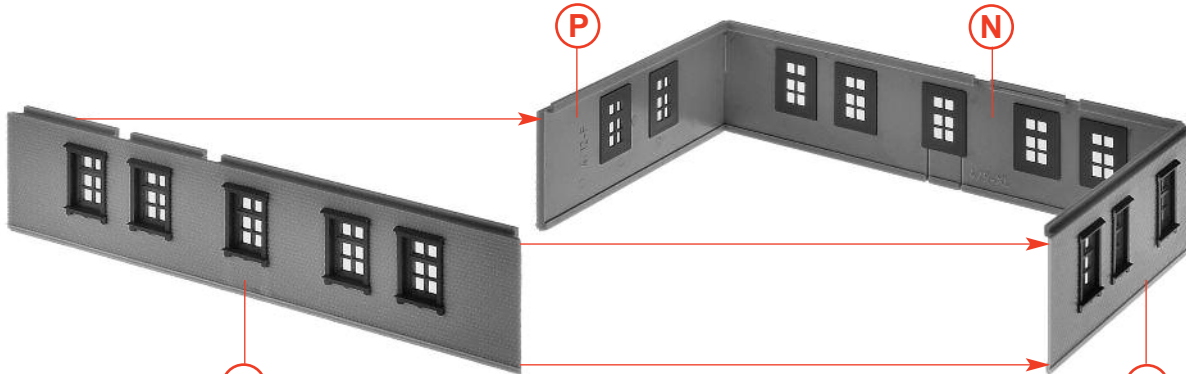
5/10

5/11

5/10

Q

R



S

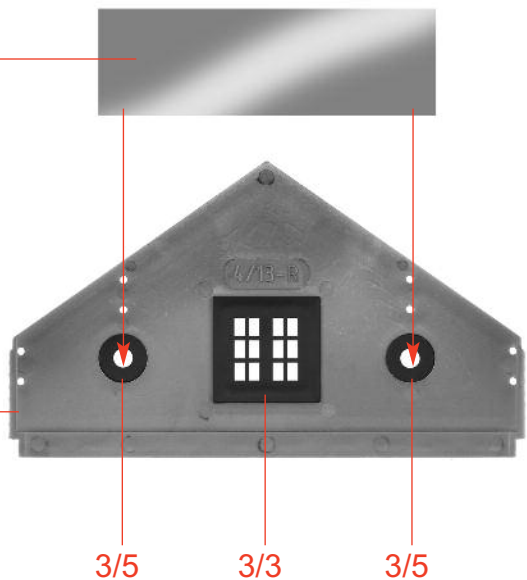
N

P

N

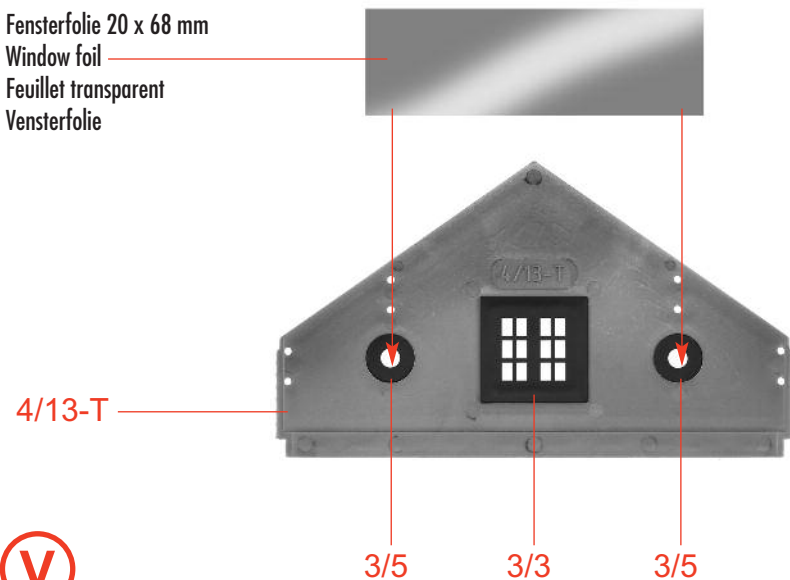
R

Fensterfolie 20 x 68 mm
Window foil
Feuillet transparent
Vensterfolie

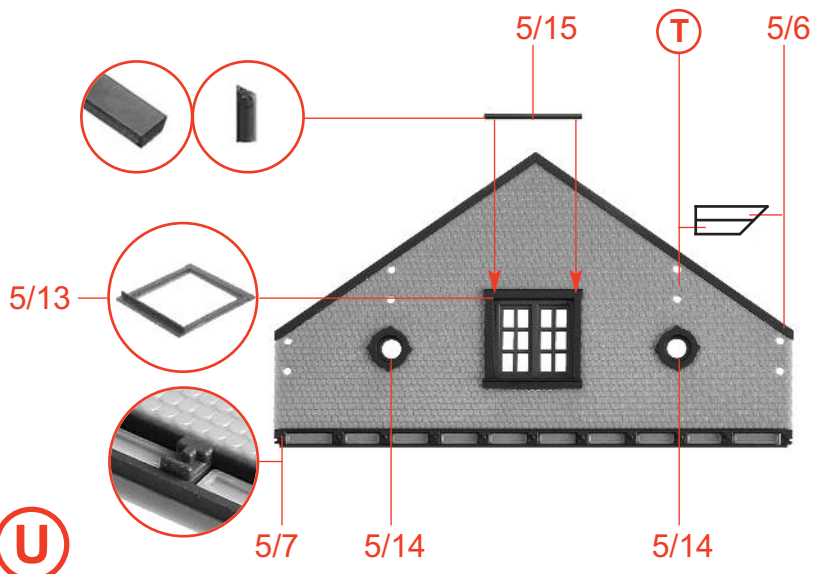


T

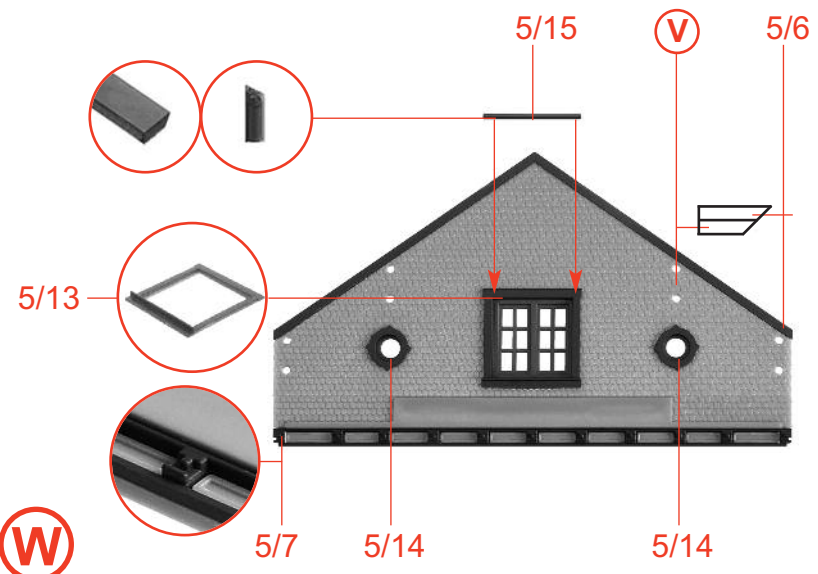
Fensterfolie 20 x 68 mm
Window foil
Feuillet transparent
Vensterfolie



V



U



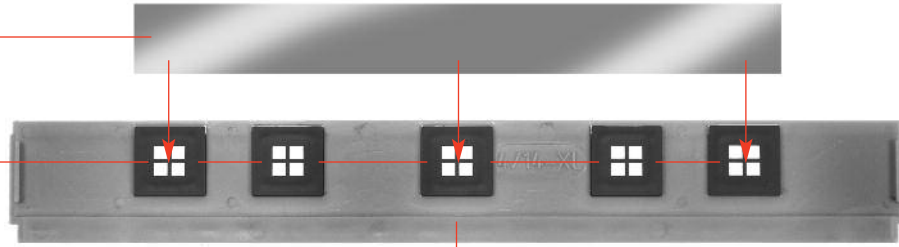
W

8

Fensterfolie 13 x 122 mm
Window foil
Feuillet transparent
Vensterfolie



3/4



4/14-XL

X 2 x

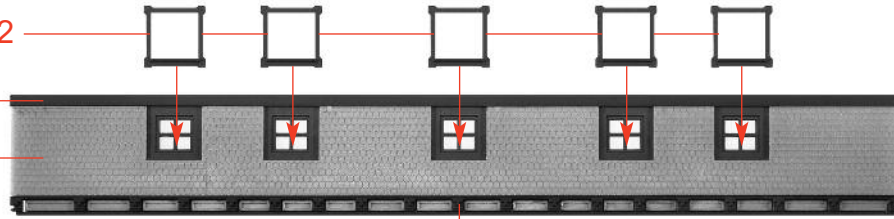


5/12

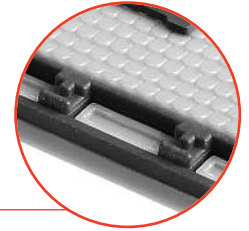
5/4



X



5/8

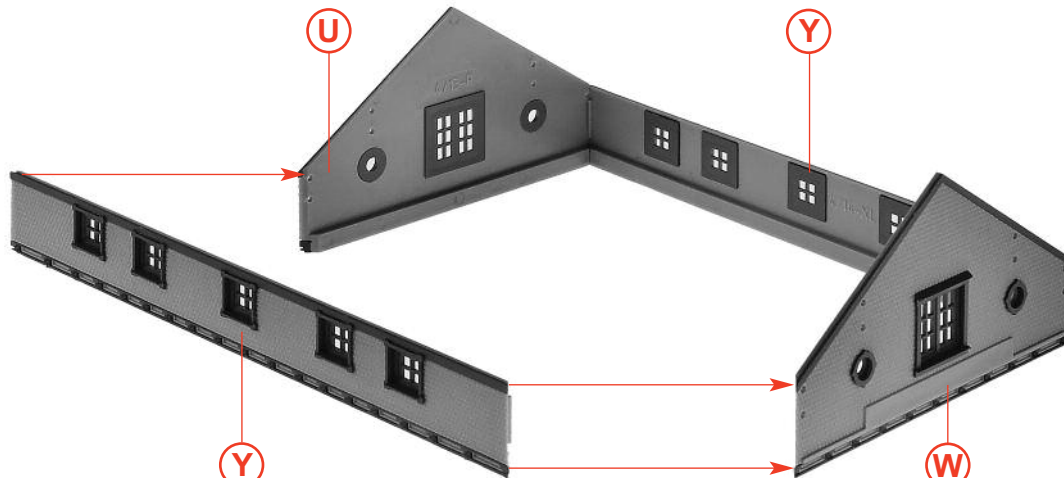


Y 2 x

Z

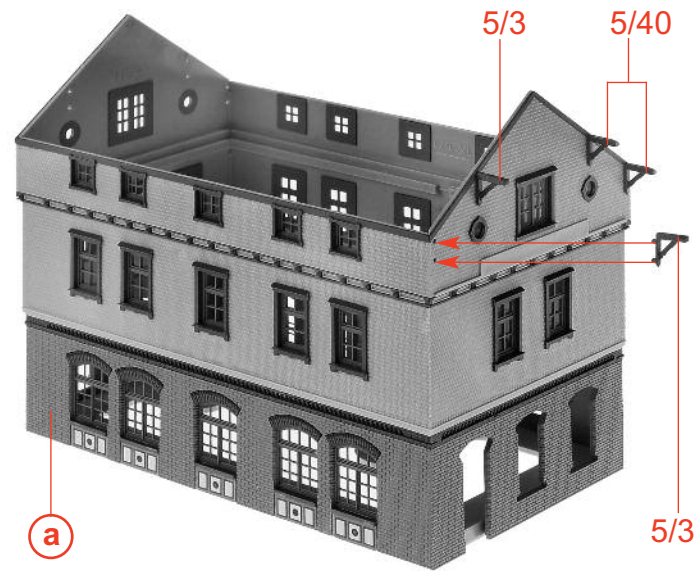
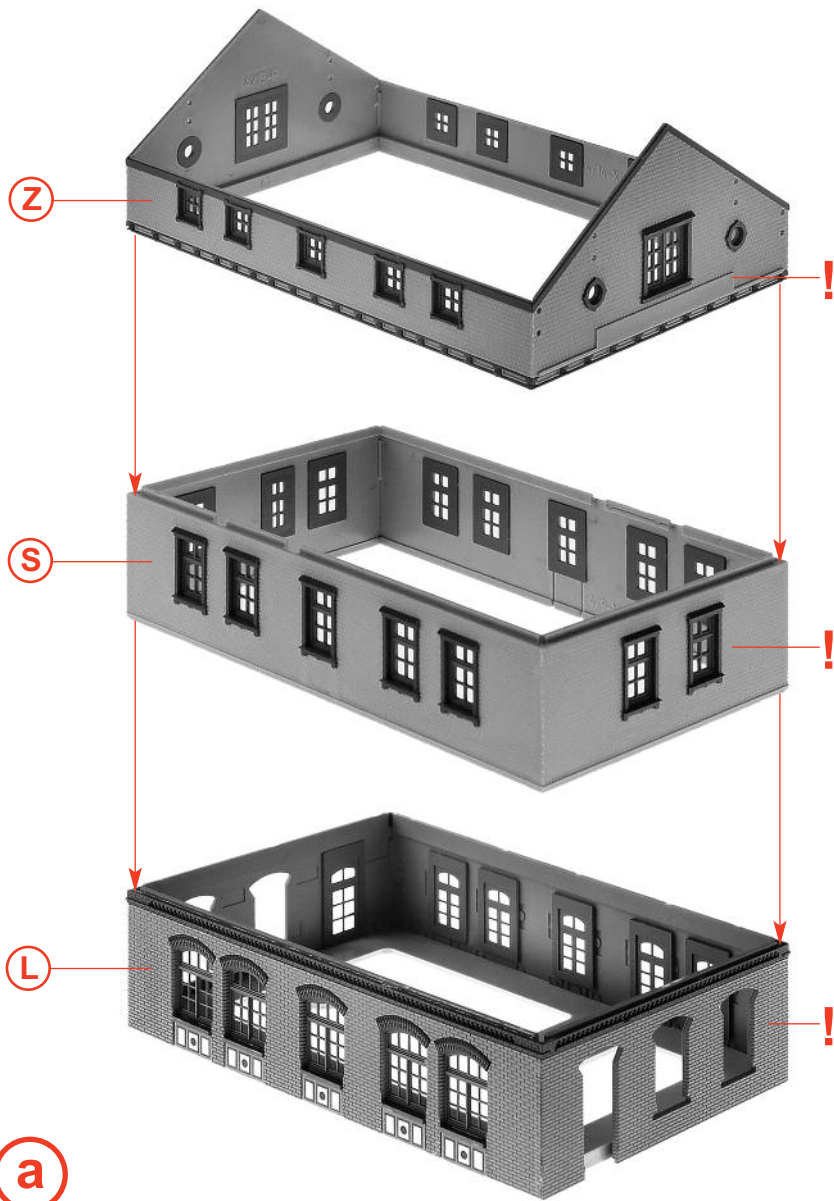
U

Y

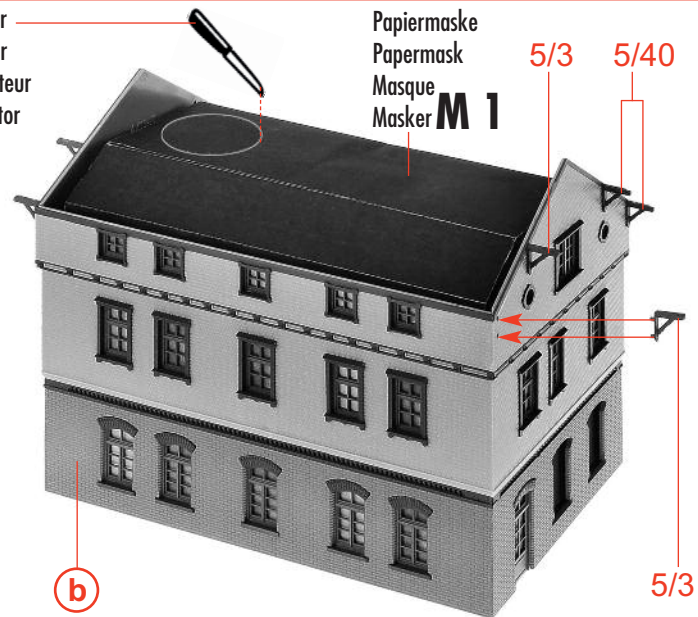


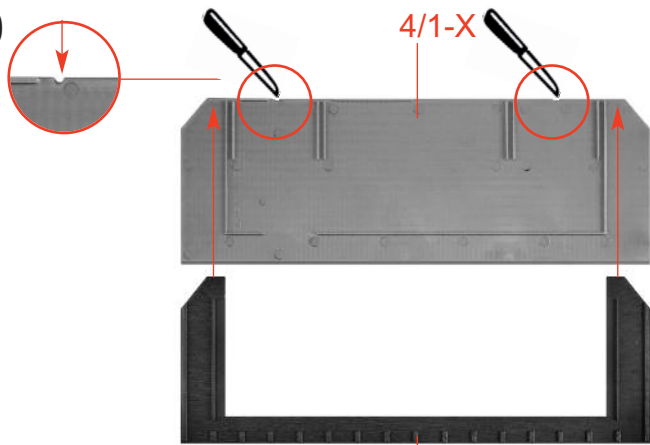
Y

W

**b****a**

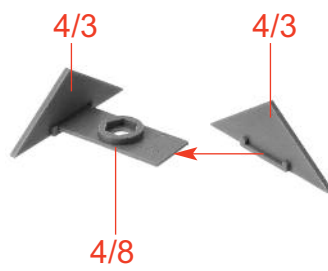
für Motor
for motor
pour moteur
voor motor

**c****b**

10

4/1-X

5/1

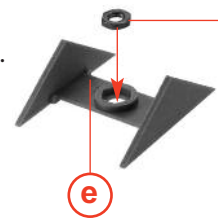
d 2 x**e** 2 x

4/3

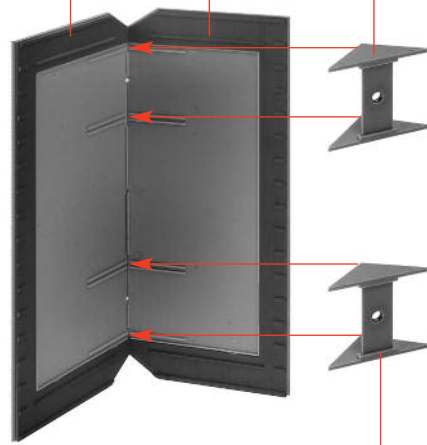
4/3

4/8

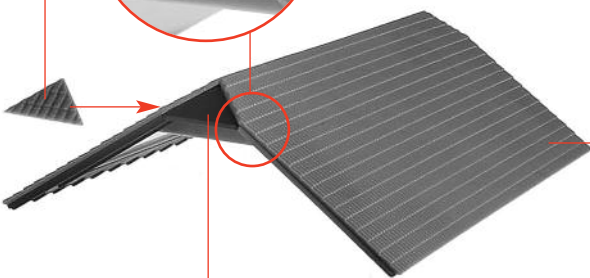
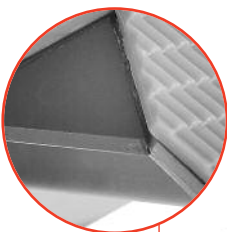
Sekundenkleber (FALLER EXPERT rapid 170500) verwenden.
 Use instant modelling cement (FALLER EXPERT rapid 170500).
 Utilisez la colle rapide (FALLER EXPERT rapid 170500).
 Gebruik secondenlijm (FALLER EXPERT rapid 170500).



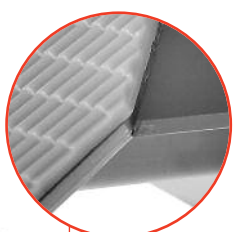
für Motor, liegt nicht bei
 for motor, not included
 pour moteur, non jointe
 voor motor, niet bijgevoegd

e**f** Variante 1 x**d****d****e****f****g****e**

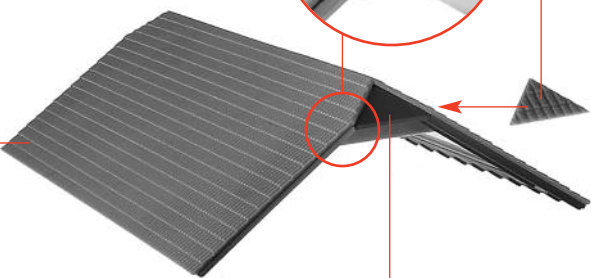
4/2

**h**

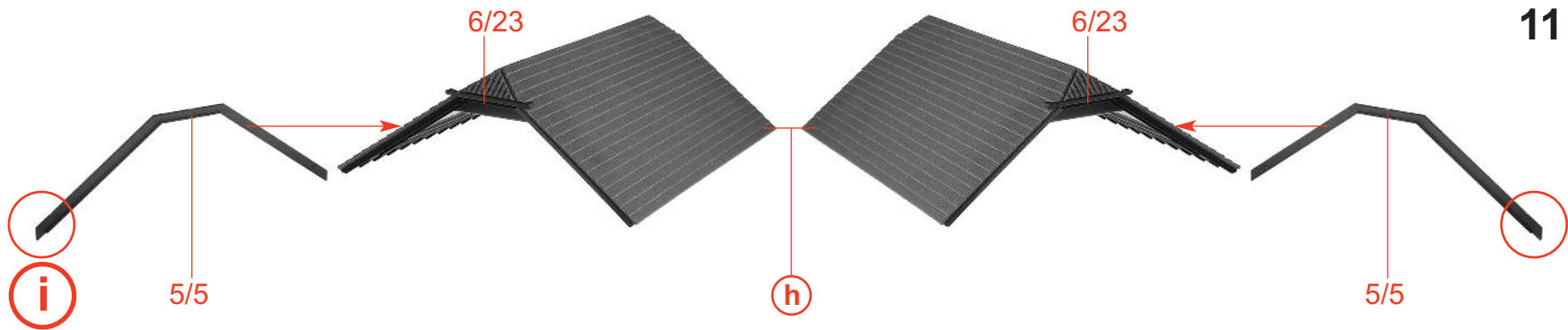
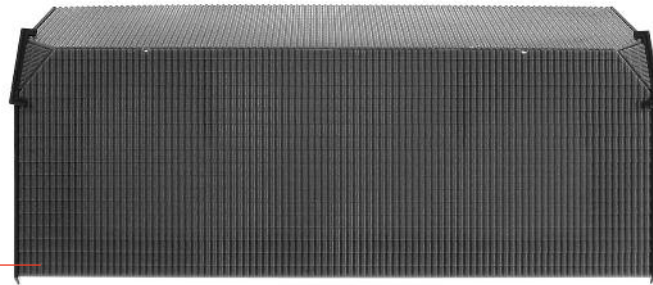
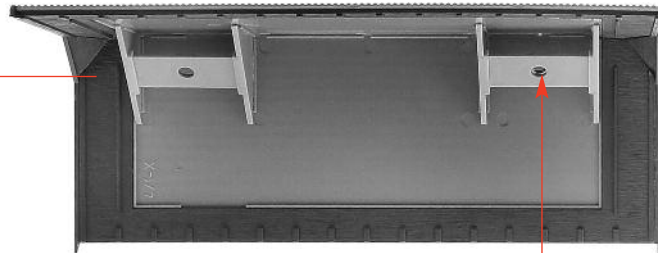
5/2

g

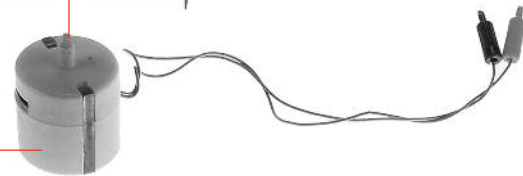
4/2



5/2

**j****i****j****k**

Art.-Nr. 180629 liegt nicht bei
 not included
 non jointe
 niet bijgevoegd



12

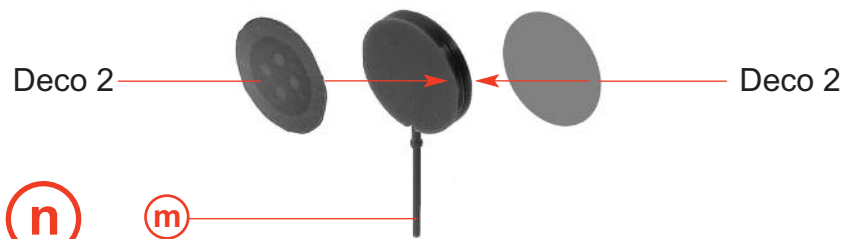
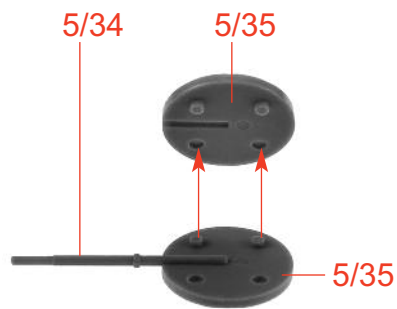
Loch mit Ø 1,6 mm bohren.
Drill hole with a dia. of 1,6 mm.
Percer un trou avec Ø 1,6 mm.
Gat met Ø 1,6 mm boren.



5/33

(l)

(m)



(n)

(m)

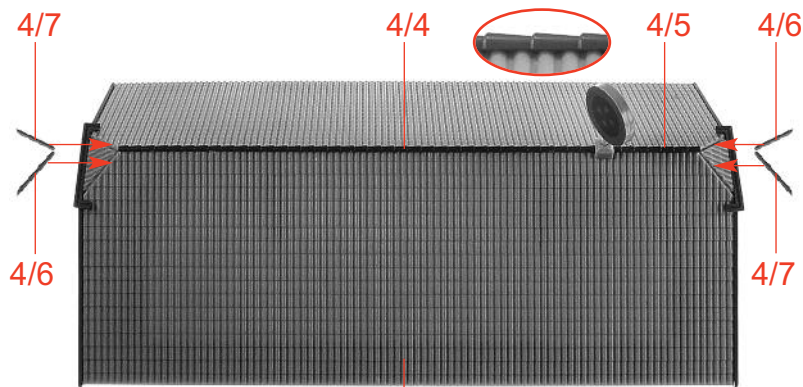
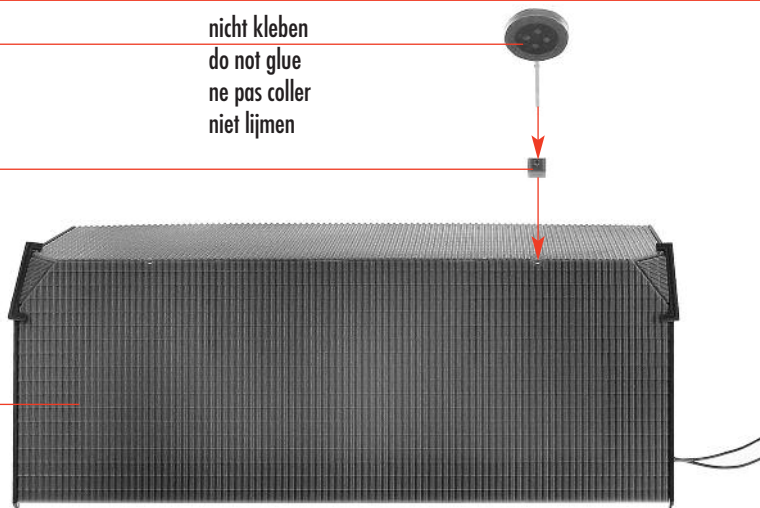
(n)

nicht kleben
do not glue
ne pas coller
niet lijmen

(l)

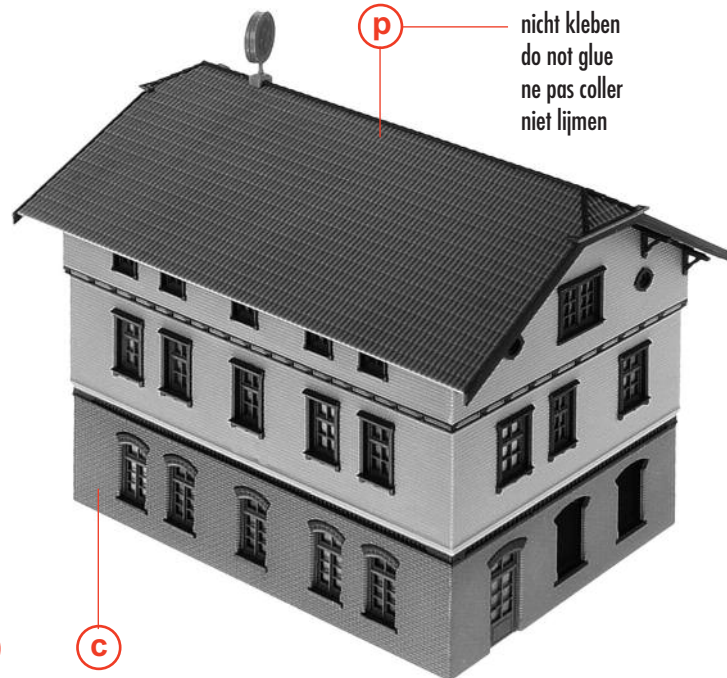
(k)

(o)



(p)

(o)

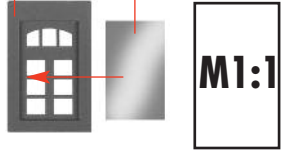


(q)

(c)

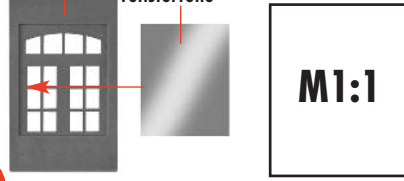
nicht kleben
do not glue
ne pas coller
niet lijmen

3/14 Fensterfolie 11,5 x 19,5 mm
Window foil
Feuillet transparent
Vensterfolie

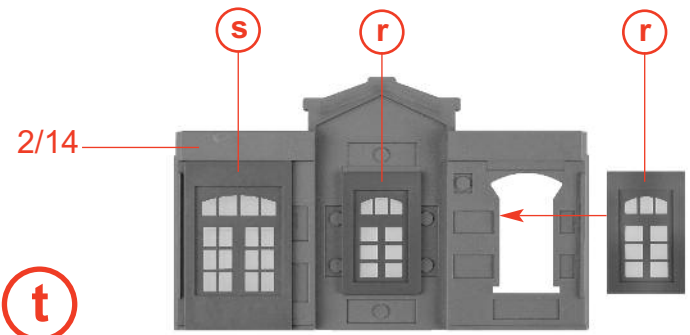


r 2 x

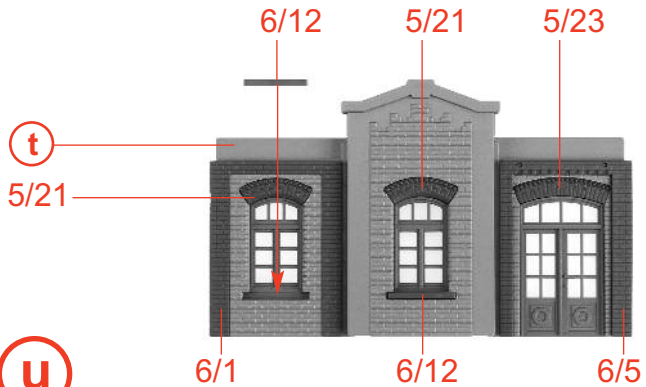
3/18 Fensterfolie 18,5 x 23 mm
Window foil
Feuillet transparent
Vensterfolie



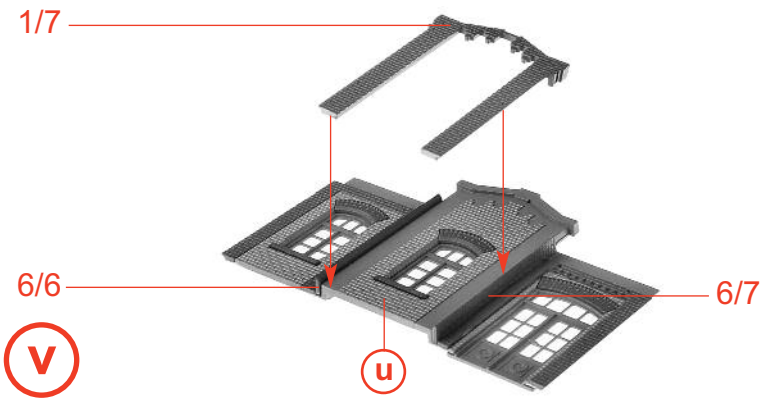
s



t

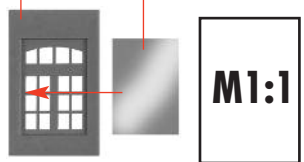


u



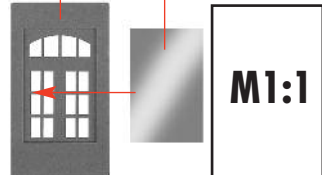
v

3/13 Fensterfolie 13,5 x 19,5 mm
Window foil
Feuillet transparent
Vensterfolie

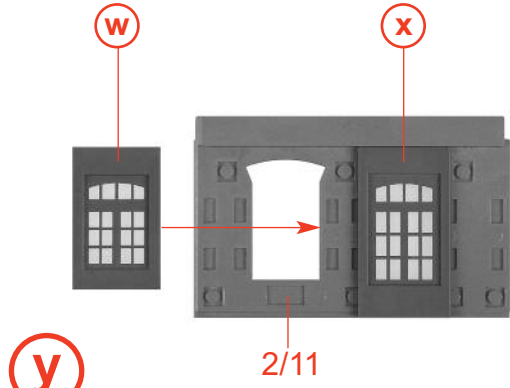


w

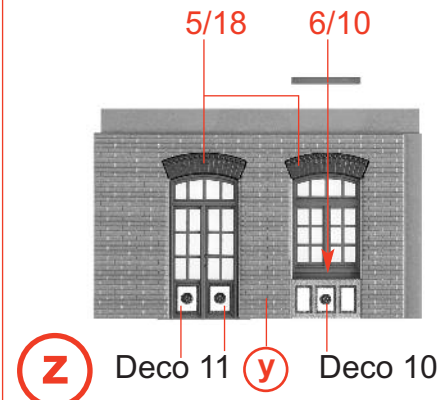
3/19 Fensterfolie 15 x 23,2 mm
Window foil
Feuillet transparent
Vensterfolie



x



y

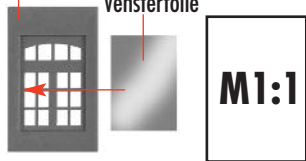


z

14

3/13

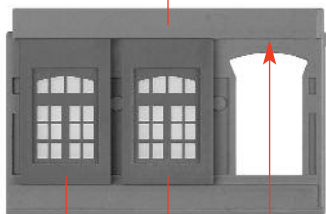
Fensterfolie 13,5 x 19,5 mm
Window foil
Feuillet transparent
Vensterfolie



3 x

(A)

2/12-F



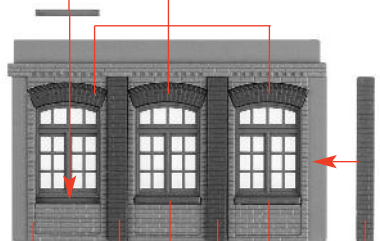
(B)

(A)



6/9

5/19



(C)

(B)

6/2

6/2

6/9

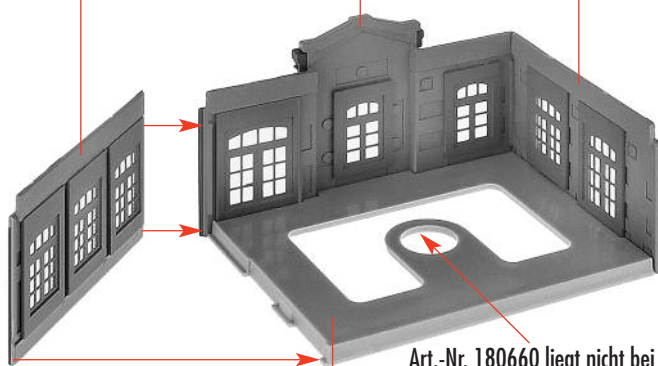
6/9

6/3

(C)

(V)

(Z)



(D)

1/9

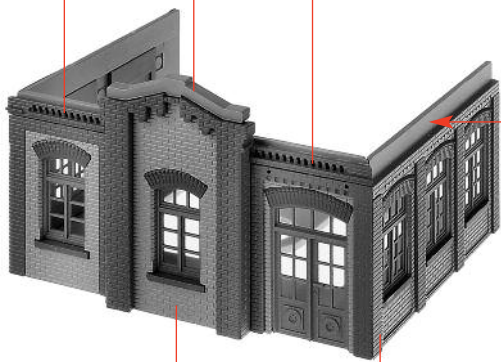
Art.-Nr. 180660 liegt nicht bei
not included
non jointe
niet bijgevoegd

5/26

6/4

5/27

5/29



(E)

(D)

6/4

3/8

5/25

3/9

6/8

5/28

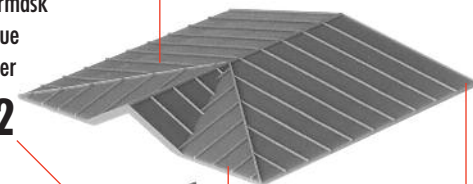
(F)

(E)

Papiermaske
Papermask
Masque
Masker

M2

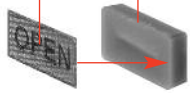
1/10



(G)

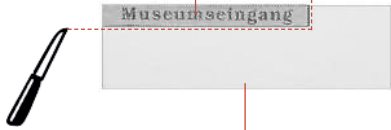
(F)

Deco 15 3/17



H

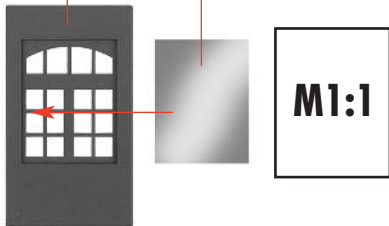
Deco 14



Fensterfolie
Window foil
Feuillet transparent
Vensterfolie

I

3/21 Fensterfolie 15,5 x 20 mm
Window foil
Feuillet transparent
Vensterfolie



K

H Fensterfolie 23 x 10 mm
Window foil
Feuillet transparent
Vensterfolie

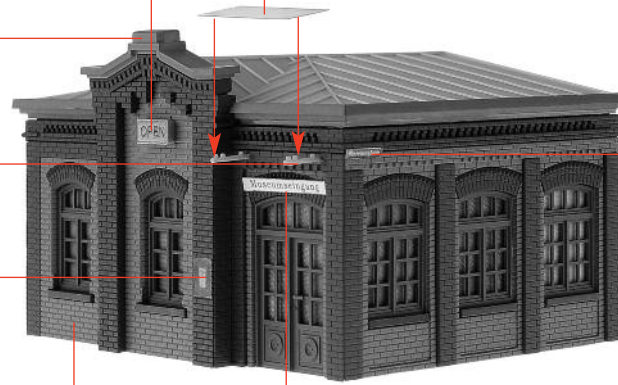
M1:1

2/13

2 x
6/20



Deco 18



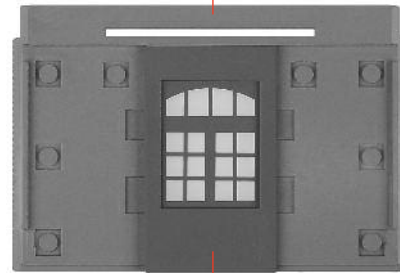
Deco 17

G

I

J

2/15

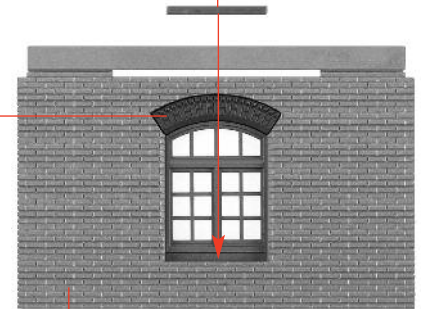


L

K

6/11

5/20



M

L

16 3/12 Fensterfolie 11,5 x 19,5 mm
Window foil
Feuillet transparent
Vensterfolie

(N) 2 x

(O)

(P)

3/13 Fensterfolie 13,5 x 19,5 mm
Window foil
Feuillet transparent
Vensterfolie

(Q) 2 x

(R)

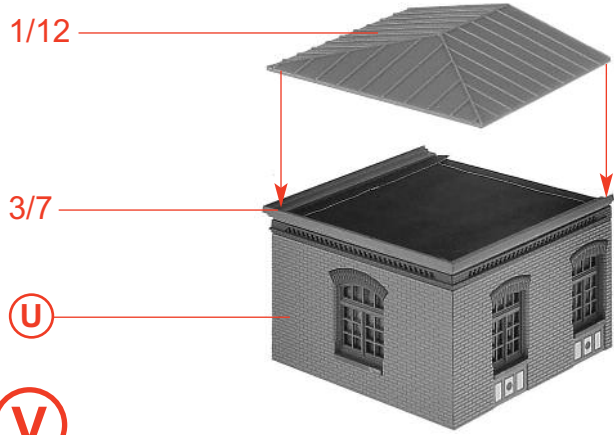
(S)

(T)

Art.-Nr. 180660 liegt nicht bei
not included
non jointe
niet bijgevoegd

Papiermaske
Papermask
Masque
Masker **M 3**

(U)



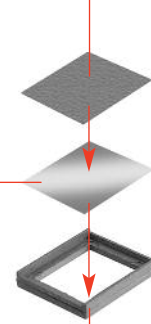
V

M1:1



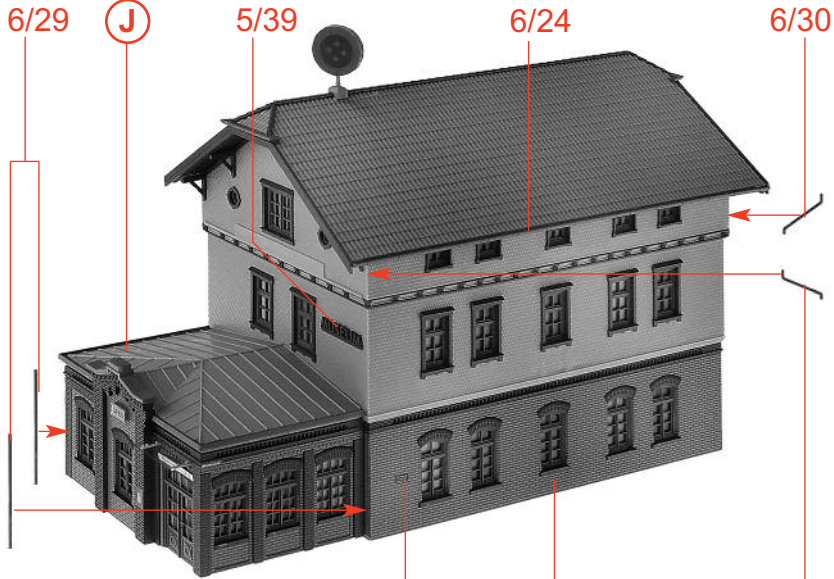
Fensterfolie 9,2 x 10,5 mm
 Window foil
 Feuillet transparent
 Vensterfolie

Deco 19



6/31

W 2 x

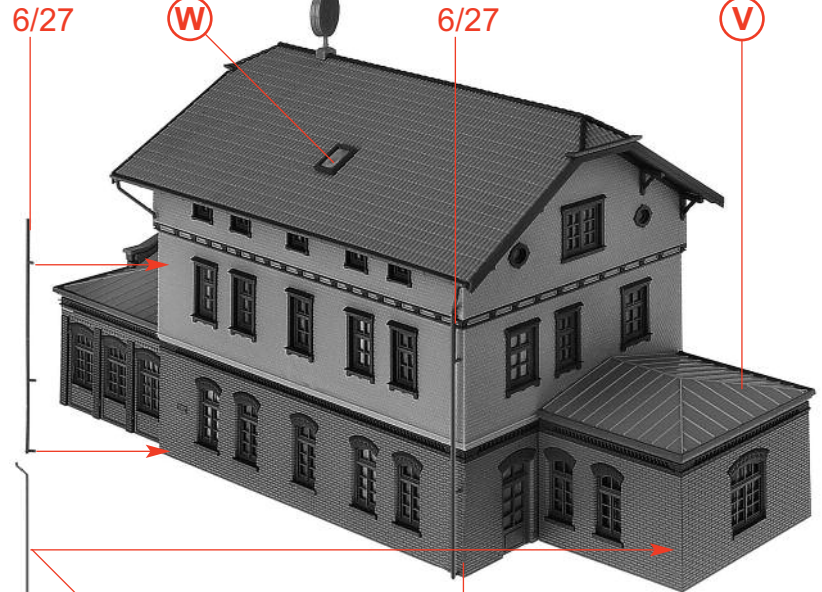


X

Deco 16

q

6/30



Y

6/26

X

18

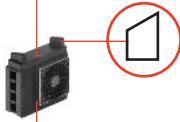
1/3 1/4



(a)

Deco 13

1/8

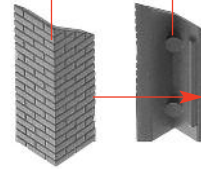


(b)

(a)

2/6

2/7



(c)

6/14

(c)



(d)

6/16



(d)

(W)

6/24

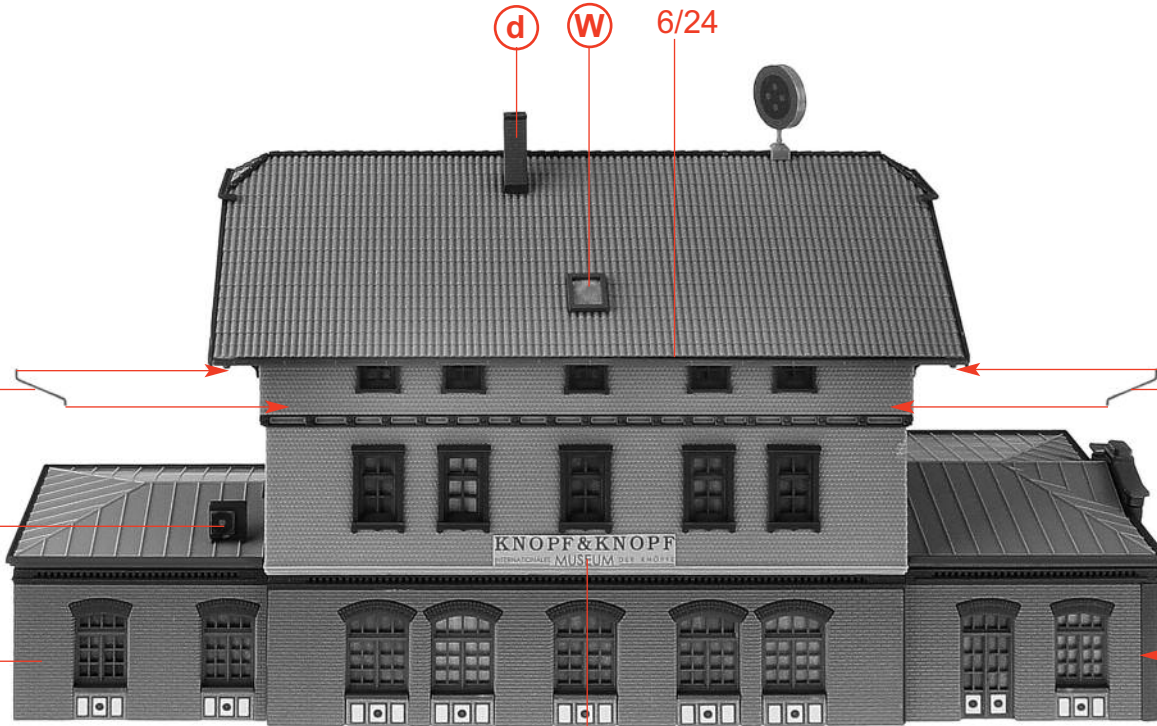
6/30

6/30

(b)

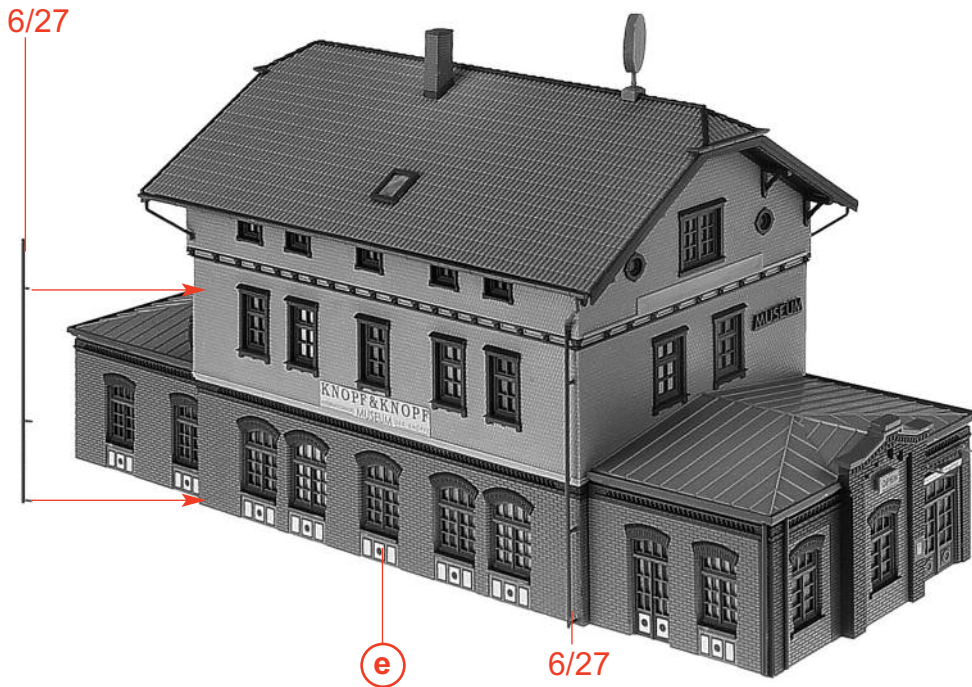
(Y)

(e)



Deco 12

6/29



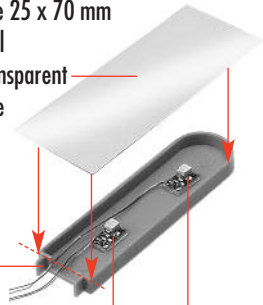
f

e

6/27

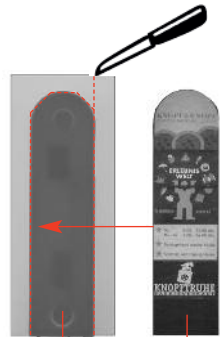
Fensterfolie 25 x 70 mm
Window foil
Feuillet transparent
Vensterfolie

5/37



Inhalt	Tüte	Contents bag
Contenu	sachet	Inhoud zakje

g

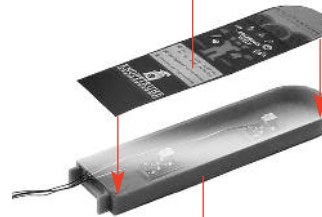


h

g

Deco 4

Deco 3



i

h

Loch mit Ø 2 mm bohren.
Drill hole with a dia. of 2 mm.
Percer un trou avec Ø 2 mm.
Gat met Ø 2 mm boren.

j

6/18



i

12-16 V AC/DC

k

j



20

Deco 7

Deco 5

6/19

6/19

3/26

3/26

Deco 8

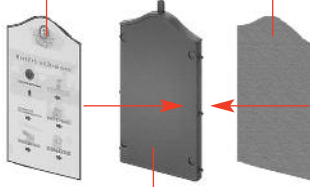
Deco 6

6/19

6/19

3/26

3/26



l

3/15

m

l

n

m

o

3/15

p

o

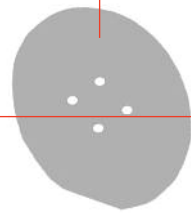
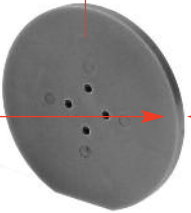
q

p

Deco 1

5/36

Deco 1



r

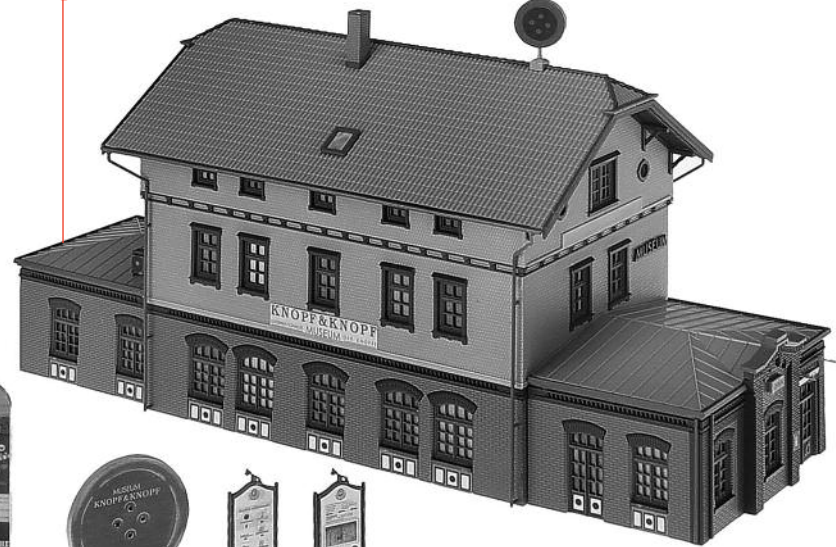
r

s

6/17



f



t

k

s

n

q

